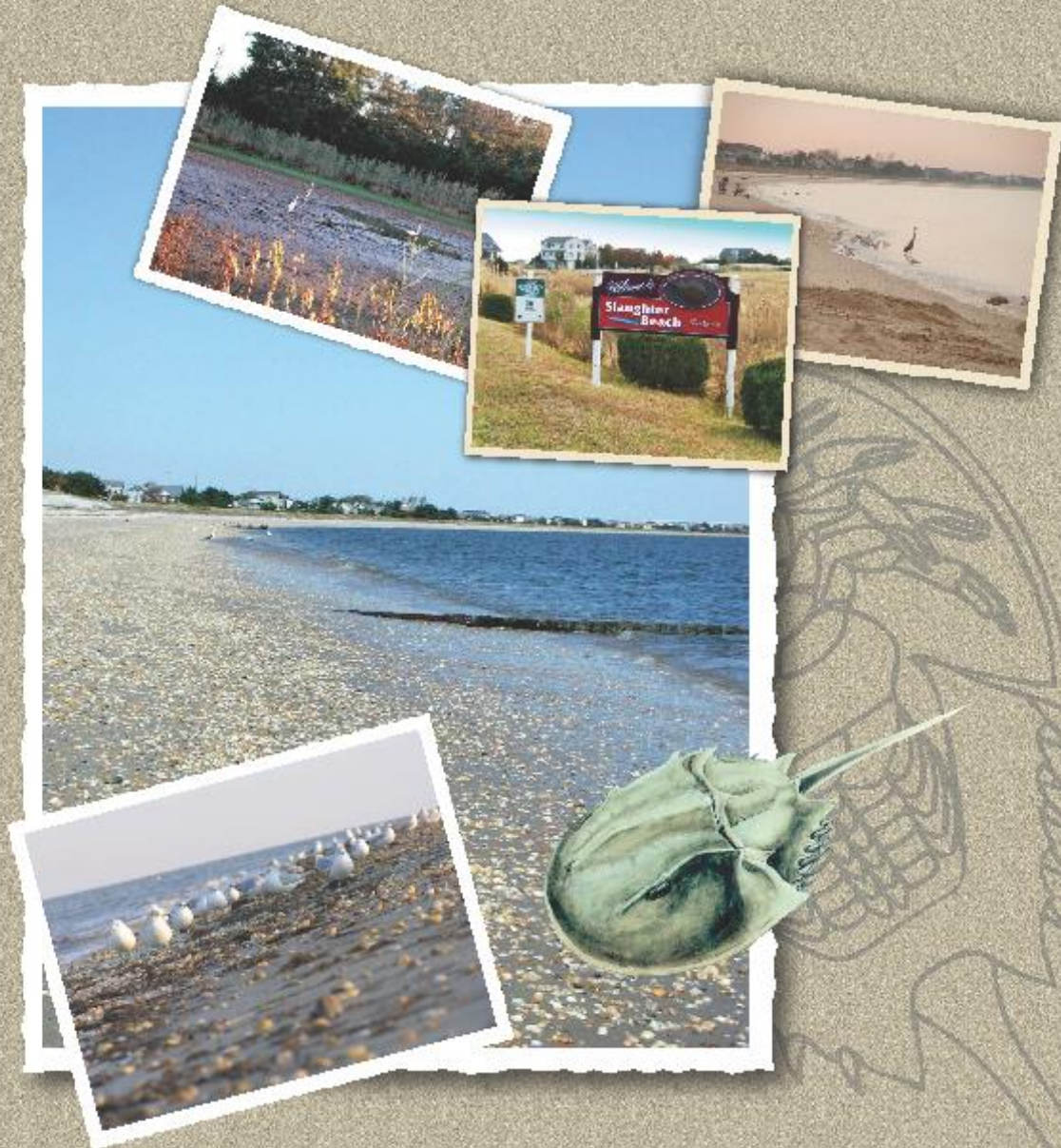


TOWN OF  
**Slaughter Beach**  
COMPREHENSIVE LAND USE PLAN



AUGUST 2018

APPENDIX A - MAPS

# **TOWN OF SLAUGHTER BEACH**

## **COMPREHENSIVE LAND USE PLAN – APPENDIX A**

### **TABLE OF CONTENTS**

<b>Map</b>	<b>Title</b>
1	Aerial View
2	Existing Land Use
3	Future Land Use
4	Wildlife Conservation Areas
5	Environmental Features
6	Floodplains
7	Areas of Concern
8	State Investment Strategies
9	Landuse Landcover





Surdex Corp

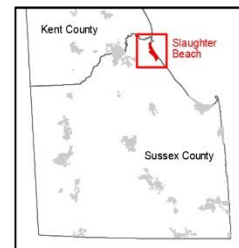
## Town of Slaughter Beach

Sussex County, Delaware

Map 1. Aerial View



### Locator Map



August 20, 2018

0 360 720 1,080 2,160 3,040 Feet

Sources:  
Delaware Imagery - Surdex Corp, 2017  
Municipal Boundaries - Office of State Planning Coordination (OSPC)  
FirstMap, 07/16

Note:  
This map is provided by the University of Delaware, Institute for Public  
Administration (IPA) solely for display and reference purposes and is subject  
to change without notice. No claims, either real or assumed, as to the absolute  
accuracy or precision of any data contained herein are made by IPA, nor will IPA  
be held responsible for any use of this document for purposes other than which  
it was intended.

UNIVERSITY OF  
DELAWARE

[www.ipa.udel.edu](http://www.ipa.udel.edu)  
Institute for Public Administration

# Town of Slaughter Beach

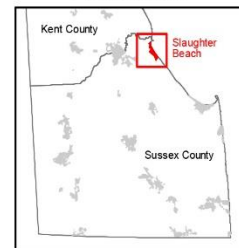
Sussex County, Delaware

## Map 2. Existing Land Use

### Existing Land Use

- Conservation-Agriculture
- Open Space
- Residential
- Residential/Commercial
- Commercial
- Wharf
- Emergency Services
- Right-of-Way
- State and County Boundaries
- Town of Slaughter Beach
- Public State Parcels
- Major Routes
- Centerline Roads
- Major Rivers
- Rivers and Streams

### Locator Map



August 20, 2018



Sources:  
Delaware Imagery - Surdex Corp. 2017.  
Existing Land Use - URBAT, digitized by the University of Delaware Institute for Public Administration, needs to be verified by the Town of Slaughter Beach, 07/18.  
Municipal Boundaries - Office of State Planning Coordination (OSPC), 07/18.  
Centerline Roads - DeDOT, FirstMap 07/18.  
Parcels - Statewide Parcels, FirstMap 07/18.

Note:  
This map is provided by the University of Delaware, Institute for Public Administration (IPA) solely for display and reference purposes and is subject to change without notice. No claims, either real or assumed, as to the absolute accuracy or precision of any data contained herein are made by IPA, nor will IPA be held responsible for any use of this document for purposes other than which it was intended.

**UNIVERSITY OF  
DELAWARE**

[www.ipa.udel.edu](http://www.ipa.udel.edu)  
Institute for Public Administration







# Town of Slaughter Beach

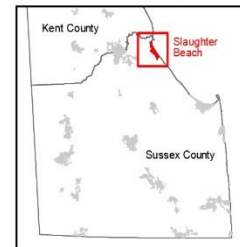
Sussex County, Delaware

Map 3. Future Land Use

## Future Land Use

- Conservation-Agriculture
- Open Space
- Residential
- Residential/Commercial
- Commercial
- Wharf
- Emergency Services
- Right-of-Way
- State and County Boundaries
- Town of Slaughter Beach
- Public State Parcels
- Major Routes
- Centerline Roads
- Major Rivers
- Rivers and Streams

## Locator Map



August 20, 2018



Sources:  
 Delaware Imagery - Sundex Corp. 2017  
 Future Land Use - DRAFT, digitized by the University of Delaware Institute for Public Administration, needs to be verified by the Town of Slaughter Beach, 07/18  
 Municipal Boundaries - Office of State Planning Coordination (OSPC), 07/18  
 ParcelMap, 07/18  
 Centerline Roads - UniDOT, ParcelMap 07/18  
 Parcels - Statewide Parcels, ParcelMap 07/18

Note:  
 This map is provided by the University of Delaware, Institute for Public Administration (IPA) solely for display and reference purposes and is subject to change without notice. No claims, either real or assumed, as to the absolute accuracy or precision of any data contained herein are made by IPA, nor will IPA be held responsible for any use of this document for purposes other than which it was intended.

**UNIVERSITY OF DELAWARE**

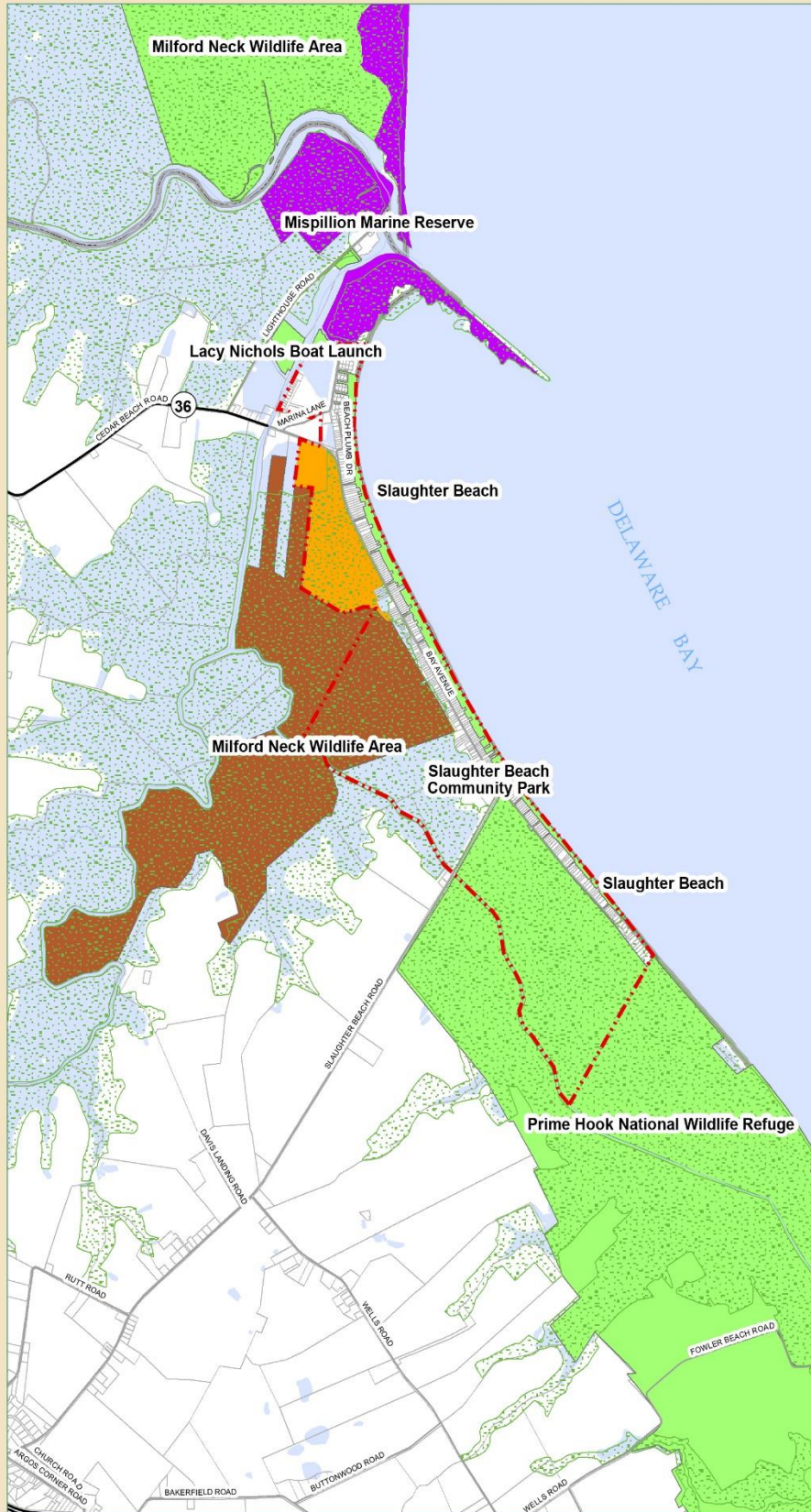
[www.ipa.udel.edu](http://www.ipa.udel.edu)  
 Institute for Public Administration

Sundex Corp. 2017

# Town of Slaughter Beach

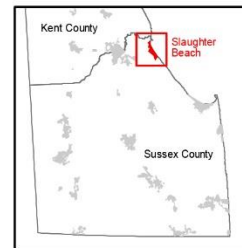
Sussex County, Delaware

## Map 4. Wildlife Conservation Areas



- Marvel Salt Marsh
- Natural Areas
- Nature Preserves
- Public Protected Lands**
  - Federal Land and Water Conservation Fund. The park is protected in perpetuity.
  - Other Public Protected Lands
- Town of Slaughter Beach
- State and County Boundaries
- Major Routes
- Centerline
- Public State Parcels
- Major Rivers
- Water Bodies

### Locator Map



August 20, 2018



Sources:  
Marvel Salt Marsh - Town of Slaughter Beach, 09/09/18  
Nature Preserves - Delaware State Parks; lands that are preserved under the designation of Nature Preserve, FirstMap 07/18  
Public Protected Lands - Delaware State Parks, FirstMap 07/18  
Municipal Boundaries - Office of State Planning Coordination (OSPC), FirstMap, 07/18  
Public State Parcels - FirstMap, 09/18  
Road Network - DelDOT, FirstMap 07/18

Note:  
This map is provided by the University of Delaware, Institute for Public Administration (IPA) solely for display and reference purposes and is subject to change without notice. No claims, either oral or assumed, as to the absolute accuracy or precision of any data contained herein are made by IPA, nor will IPA be held responsible for any use of this document for purposes other than which it was intended.

**UNIVERSITY OF DELAWARE**

[www.ipa.udel.edu](http://www.ipa.udel.edu)  
Institute for Public Administration



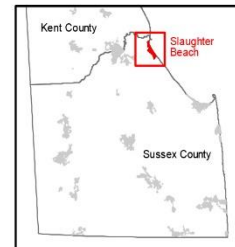
# Town of Slaughter Beach

Sussex County, Delaware

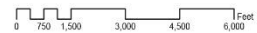
## Map 5. Environmental Features

-  Well Head Protection Areas
-  Groundwater Recharge Areas
-  Agricultural Easement
-  Agricultural Expansion
-  Wetlands
-  Head of Tide Wetlands 2007
-  State and County Boundaries
-  Town of Slaughter Beach
-  Public State Parcels
-  Major Routes
-  Centerline Roads
-  Major Rivers
-  Water Bodies

### Locator Map



August 20, 2018

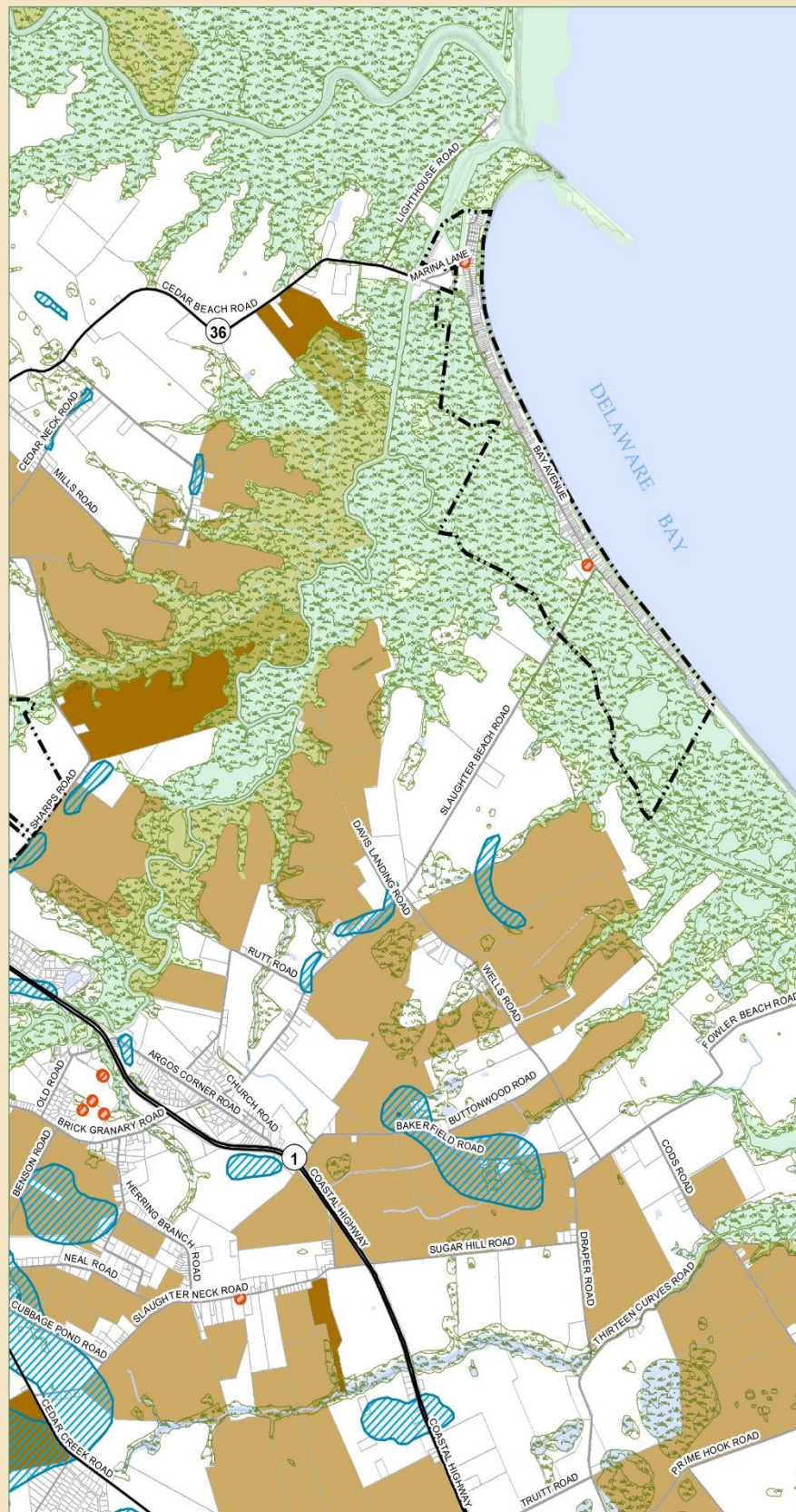


Sources:  
 Delaware Imagery - Surox Corp, 2017.  
 Municipal Boundaries - Office of State Planning Coordination (OSPC), FirstMap 0718.  
 Centerline Roads - DelDOT, FirstMap 0718.  
 Parcels - Statewide Parcel, FirstMap 0718.  
 Delaware Wetlands - DNRREC, Division of Wetlands, FirstMap 0718.  
 Groundwater Recharge Potential Areas - Delaware Geological Survey, FirstMap 0718.  
 Delaware Agricultural Lands - Delaware Department of Agriculture, FirstMap 0718.  
 Delaware Wellhead Protection Areas - DNRREC, Division of Water, FirstMap 0718.

Note:  
 This map is provided by the University of Delaware, Institute for Public Administration (IPA) solely for display and reference purposes and is subject to change without notice. No claims, either real or assumed, as to the absolute accuracy or precision of any data contained herein are made by IPA, nor will IPA be held responsible for any use of this document for purposes other than which it was intended.

**UNIVERSITY OF DELAWARE**

[www.ipa.udel.edu](http://www.ipa.udel.edu)  
 Institute for Public Administration





# Town of Slaughter Beach

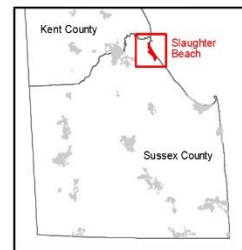
Sussex County, Delaware

## Map 6. FEMA Floodplains

### Flood Zone

- A
- AE
- AE, FLOODWAY
- AO
- VE
- X, 0.2 PCT ANNUAL CHANCE FLOOD HAZARD
- Base Flood Elevation
- Transect
- Cross Sections
- LiMWA
- Town of Slaughter Beach
- State and County Boundaries
- Major Routes
- Centerline Roads
- Public State Parcels

### Locator Map



August 20, 2018

0 305 610 1,220 2,440 4,880 Feet

Sources:  
DE - FIRM - FEMA Flood Maps, FirstMap 07/18  
Municipal Boundaries - Office of State Planning Coordination (OSPC)  
FirstMap 07/18  
Centerline Roads - DelDOT, FirstMap 07/18  
Parcels - Statewide Parcels, FirstMap 07/18

Note:  
This map is provided by the University of Delaware, Institute for Public Administration (IPA) solely for display and reference purposes and is subject to change without notice. No claims, either real or assumed, as to the absolute accuracy or precision of any data contained herein are made by IPA, nor will IPA be held responsible for any use of this document for purposes other than which it was intended.

UNIVERSITY OF  
DELAWARE

[www.ipa.udel.edu](http://www.ipa.udel.edu)  
Institute for Public Administration



FEMA, Surdex Corp, 2017

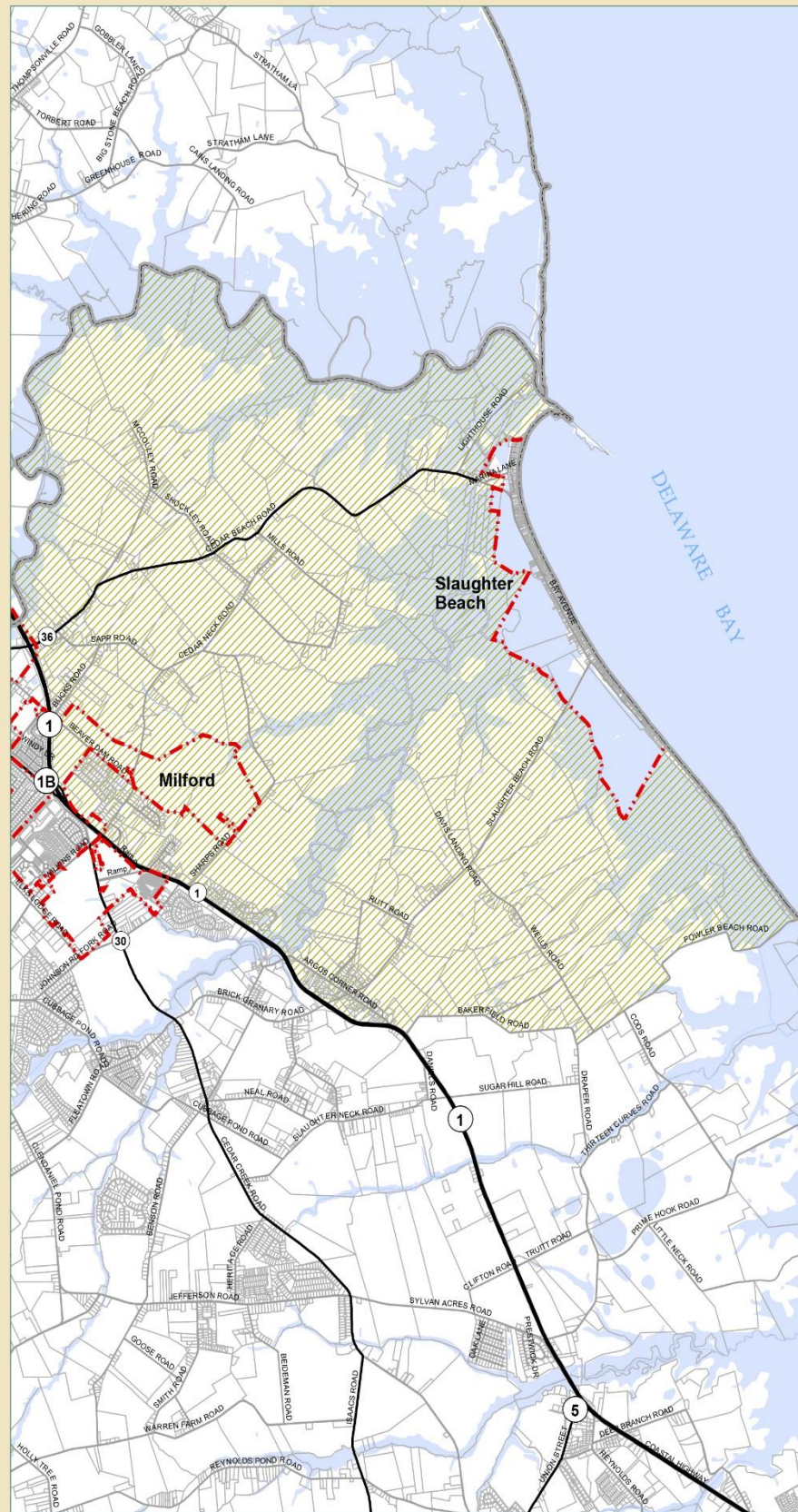


# Town of Slaughter Beach

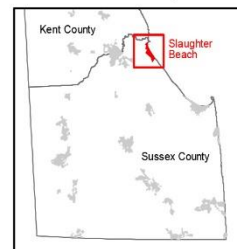
Sussex County, Delaware

Map 7.  
Areas of Concern

-  Area of Concern
-  State and County Boundaries
-  Municipal Boundaries
-  Public State Parcels
-  Major Routes
-  Centerline
-  Major Rivers
-  Water Bodies



Locator Map



August 20, 2018



Sources:  
Municipal Boundaries - Office of State Planning Coordination (OSPC)  
FirstMap 07/18  
Area of Concern - Determined by the Town of Slaughter Beach, Delaware, 08/18  
Road Network - DeDOT, FirstMap 07/18  
Public State Parcels - Sussex County Mapping and Addressing, FirstMap 09/18

Note:  
This map is provided by the University of Delaware, Institute for Public Administration (IPA) solely for display and reference purposes and is subject to change without notice. No claims, either real or assumed, as to the absolute accuracy or precision of any data contained herein are made by IPA, nor will IPA be held responsible for any use of this document for purposes other than which it was intended.

**UNIVERSITY OF DELAWARE**

[www.ipa.udel.edu](http://www.ipa.udel.edu)  
Institute for Public Administration



## Town of Slaughter Beach

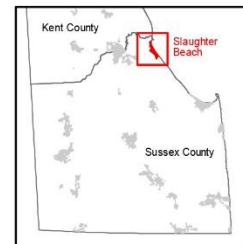
Sussex County, Delaware

### Map 8. Strategies for State Policies and Spending

#### Strategy Levels for State Policies & Spending

- Level 1
- Level 2
- Level 3
- Level 4
- Out of Play
- Town of Slaughter Beach
- State and County Boundaries
- Major Routes
- Centerline Roads
- Public State Parcels
- Rivers and Streams
- Bodies of Water

#### Locator Map



August 20, 2018

0 337.5 675 1,350 2,025 2,700 Feet

Sources:  
Investment Strategies for Policies and Spending - Office of State Planning  
Coordination (CMB), FirstMap 2015.  
Municipal Boundaries - Office of State Planning Coordination (CMB),  
FirstMap 07/16.  
Centerline Roads - Delaware DOT, FirstMap 07/16.  
Parcels - Statewide Parcels, FirstMap 07/16.

Note:  
This map is provided by the University of Delaware, Institute for Public  
Administration (IPA) solely for display and reference purposes and is subject  
to change without notice. No claims, either real or assumed, as to the absolute  
accuracy or precision of any data contained herein are made by IPA, nor will IPA  
be held responsible for any use of this document for purposes other than which  
it was intended.

UNIVERSITY OF  
DELAWARE

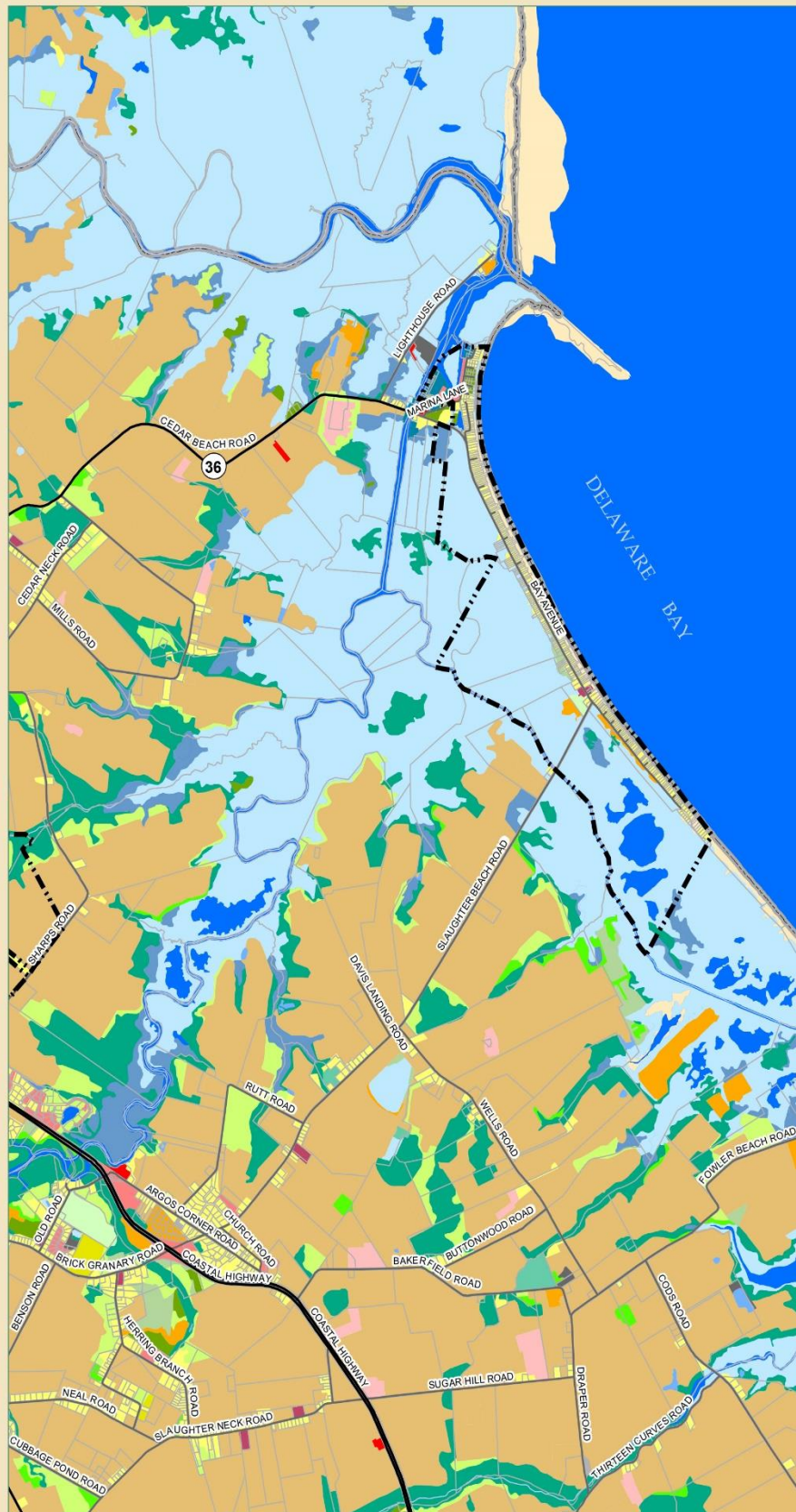
[www.ipa.udel.edu](http://www.ipa.udel.edu)  
institute for Public Administration



# Town of Slaughter Beach

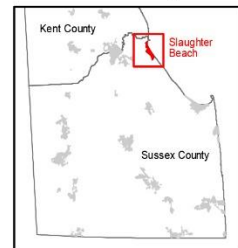
Sussex County, Delaware

Map 9.  
2012 Landuse Landcover

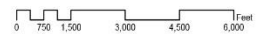


- Landuse Landcover 2012**
- Mixed Residential
  - Single Family Dwellings
  - Multi-Family Dwellings
  - Mobile Home Parks/Courts
  - Commercial
  - Industrial
  - Transportation/Communication/Utilities
  - Mixed Urban/Built-up
  - Institutional/Governmental
  - Recreational
  - Farms, Pasture, Cropland
  - Confined Animal Feeding Operations/Feedlots/Holding
  - Rangeland
  - Orchards/Nurseries/Horticulture
  - Deciduous Forest
  - Evergreen Forest
  - Mixed Forest
  - Shrub/Brush Rangeland
  - Clear-cut
  - Man-made Reservoirs and Impoundments
  - Marinas/Port Facilities/Docks
  - Open Water
  - Emergent Wetlands - Tidal and Non-tidal
  - Forested Wetlands - Tidal and Non-tidal
  - Scrub/Shrub Wetlands - Tidal and Non-tidal
  - Sandy Areas and Shoreline
  - Extraction and Transitional
  - State and County Boundaries
  - Town of Slaughter Beach
  - Public State Parcels
  - Major Routes
  - Centerline Roads
  - Major Rivers
  - Bodies of Water

## Locator Map



August 20, 2018



**Sources:**  
 2012 Landuse / Landcover - derived from the 2012 Aerial Imagery, FirstMap 0718  
 Municipal Boundaries - Office of State Planning Coordination (OSPC), FirstMap 0718  
 Centerline Roads - DelDOT, FirstMap 0718  
 Parcels - Statewide Parcels, FirstMap 0718

**Note:**  
 This map is provided by the University of Delaware, Institute for Public Administration (IPA) solely for display and reference purposes and is subject to change without notice. No claims, either real or assumed, as to the absolute accuracy or precision of any data contained herein are made by IPA, nor will IPA be held responsible for any use of this document for purposes other than which it was intended.

**UNIVERSITY OF  
DELAWARE**

[www.ipa.udel.edu](http://www.ipa.udel.edu)  
 Institute for Public Administration